

Aspera Console

Network-wide transfer management, monitoring and control

AT A GLANCE

Key Features

- Web-based application accessible from any standard browser.
- Automate Aspera transfers, for one-time and recurring transfer schedules.
- Create custom pre- and post-processing functionality on managed nodes.
- Configure all node properties including bandwidth controls, encryption settings, directory creation masks, and email notifications.
- Define transfer and authorization settings by user or group, including bandwidth caps, transfer priorities, encryption and security settings.
- Centralized transfer history database with automated backup and purging.
- Customizable reporting engine for user-defined reports and advanced custom query development.
- Efficiently pulls transfer reporting data from managed nodes using the Aspera node API.
- Managed nodes can be monitored by multiple Consoles
- Single sign-on support through SAML

Key Benefits

- Consolidated, single-point management of transfer activity and bandwidth utilization across your entire Aspera network.
- Ability to remotely monitor, initiate and control transfers in real time ensures that high-priority content is delivered on time.
- Centralized node and user management helps implement uniform, organization-wide access and transfer policies.
- Comprehensive transfer history database provides a wealth of information which can be extracted through an easy-to-use reporting engine with an option to write custom queries.
- Open architecture for integration with business process management and content transformation tools

Aspera Console is a web-based management application that provides complete visibility over your Aspera high-speed transfer environment, enables centralized control over transfers, nodes and users, and maintains comprehensive logging for customized reports and auditing.

CENTRALIZED MONITORING AND CONTROL

Aspera Console allows administrators to monitor and control network-wide transfer activity and bandwidth utilization. A dashboard provides an overview of all activity and enables drill-down views of the performance of individual transfers and node activity. Users can adjust transfer speeds and priorities on the fly and configure aggregate bandwidth per node or per user group. Ad-hoc transfer jobs can be initiated remotely between nodes and “Smart Transfers” can be used for multi-point distribution of files or directories and as templates for automated, repeatable transfer jobs.

TRANSFER AUTOMATION

With Aspera Console, users can create automated one-time or recurring transfers including multi-point “Smart Transfers” that can later be copied, modified and re-used. Smart Transfers support transfers initiated behind an Aspera Proxy, pull transfers initiated from the destination node, and easier to manage permission settings for sharing. Aspera Console enables automatic forwarding of content to and from any managed node with files arriving via Aspera transfers,

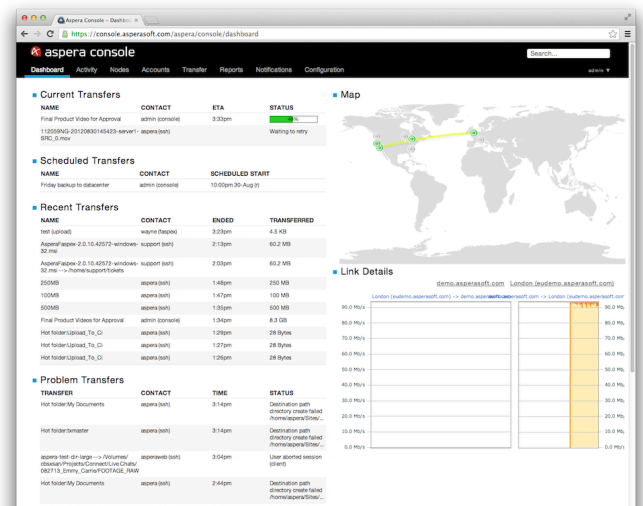
FTP or any other means. It also integrates with Aspera Sync to control and report on multi-site, multi-directional file synchronizations.

COMPREHENSIVE NODE AND USER MANAGEMENT

Aspera Console allows administrators to configure all node properties including bandwidth controls, encryption settings, and email notifications. Transfer settings and authorization policies can be set by user or by group to control bandwidth caps, transfer priorities and security settings.

CUSTOMIZED REPORTING AND AUDITING

Aspera Console queries transfer reporting data from managed nodes using the Aspera node API to offer greater scalability and robustness. Aspera Console maintains a central transfer history database capable of automated backups and purging. Users can create reports to track transfer activity by date, IP address or user and export them to XML or CSV. Customizable reporting engine includes a graphical composer for creating userdefined reports and provides an advanced mode for writing custom queries.



SUPPORTED PLATFORMS

Server

- Windows: 2008r2, 2012r2, 2016
- Linux 64-bit: RedHat 6-7, CentOS 6-7, SUSE 11-12; Aspera Common Components 1.2.22

Browsers

- Internet Explorer 8+, Firefox 27+, Safari 6+, Google Chrome 40+

TYPICAL APPLICATIONS

Centralized control over Aspera high-speed transfer environment

Remotely manage all nodes and transfers via a single-point application.

Complex workflow management

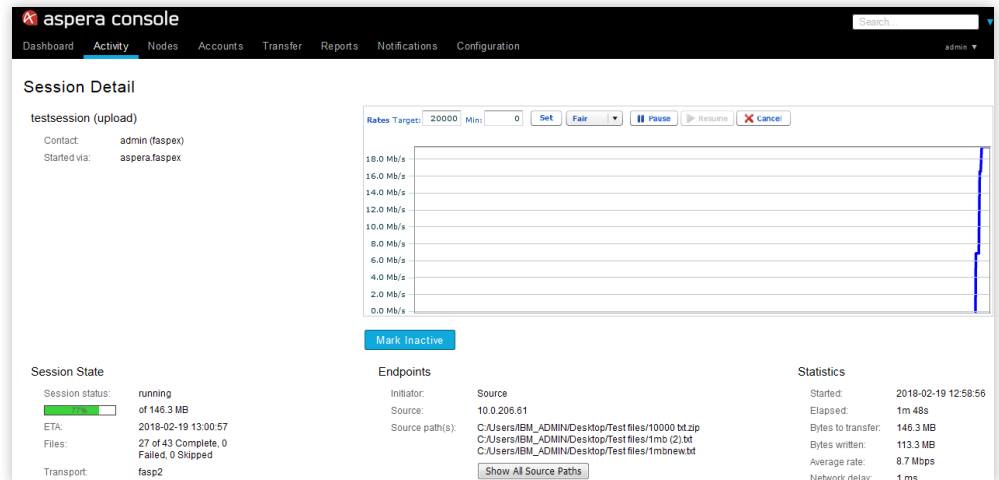
Create reusable transfer templates and schedule recurring transfers with custom pre- and post-processing steps.

User and group management

Configure user and group policies for all managed nodes from a single interface.

Reporting and auditing

Create customized transfer and node activity reports for auditing and billing.



FEATURES AND BENEFITS

Centralized administration and control

- Consolidated dashboard and detailed drill-down views to monitor and control network-wide transfer activity and bandwidth utilization.
- On-the-fly control over individual transfers' speed and priority.
- Configuration of aggregate bandwidth per node or per user group.
- Remotely browse nodes and initiate ad-hoc transfer jobs.

Transfer Automation

- Create automated one-time or recurring Aspera transfers.
- Add custom pre- and post-processing functionality on managed nodes using scripts, web services or SDK library.
- Automatically forward any file to/from any managed Aspera node.
- Open architecture for integration with business process management and content transformation tools.

Node management and user access control

- Efficiently pulls transfer reporting data from managed nodes using Aspera node API.
- Managed nodes can be monitored by multiple Consoles.
- Single sign-on support through SAML.
- Remotely configure all node properties such as bandwidth controls, encryption settings, directory creation masks, and email notifications.
- Define transfer settings and authorization policies by user, including bandwidth caps and priorities, encryption and security settings.
- Maintain strict security with SSH authentication, secure tunneling to Aspera nodes, per-user encryption settings and enforceable encryption-at-rest policies.

Reporting and auditing

- New email notification resending and troubleshooting workflow.
- Sync reporting is fully supported.
- Comprehensive, centralized transfer history database with automatic scheduled backups and age-based purging.
- Users can create activity reports by day, IP address or user and export to XML or CSV.
- Reporting engine with graphical report designer enables user-defined reports for usage tracking, audits or billing, and provides advanced mode for any custom query.

About Aspera

Aspera, an IBM Company, is the creator of next-generation transport technologies that move the world's data at maximum speed regardless of file size, transfer distance and network conditions. Based on its patented, Emmy® award-winning FASP® protocol, Aspera software fully utilizes existing infrastructures to deliver the fastest, most predictable file-transfer experience. Aspera's core technology delivers unprecedented control over bandwidth, complete security and uncompromising reliability.

Learn more at www.asperasoft.com and follow us on Twitter @asperasoft for more information.