

# Aspera Enterprise Server

## Universal file transfer server with desktop and mobile clients

### AT A GLANCE

#### Key Features

- Deployable on premises or in the cloud (public, private, hybrid)
- Parallel/multi-host transfer feature enables mass data transfers to multiple computers in both cloud storage and on-premises compute clusters
- Configurable encryption settings per user, with complete transfer authorization policies and security options.
- Server side encryption at rest for seamless on-the-fly encryption and decryption of content written to Aspera server hosts using a secret supplied by the server.
- Create repeatable and scheduled transfers (one-time and recurring) through templates using Aspera Console.
- Utilize hot folder services and define custom pre- and post-delivery functionality using scriptable command line, web services or SDK library.
- Create unlimited number of users and define access rights and transfer settings for each one.
- Remote central management, monitoring and control through Aspera Console, including auditable, centralized transfer history.

#### Key Benefits

- Guaranteed delivery times with “minimum transfer rate” configurable via transfer priority levels.
- Highly scalable, with thousands of con-current transfer sessions and multi-gigabit per second aggregate throughput.
- Benefit from Aspera’s top-notch engineering and R&D via an annual development subscription, which includes all available libraries, APIs, development licenses and support.
- Maximum control, even resource usage, and fastest transfer times with configurable options for controlling the intra-file ‘splitting’ over the parallel sessions

Combining next-generation transport with exceptional transfer and user management capabilities for enterprise applications, the Aspera Enterprise Server is the industry standard for serving up files, directories

and large data sets over the WAN with unrivaled Aspera performance.

Built on patented FASP® technology, the Aspera Enterprise Server delivers maximum transfer

throughput independent of distance and network conditions, typically achieving 10-100x speed improvement over FTP/SCP, with end-to-end security and exceptional bandwidth control.

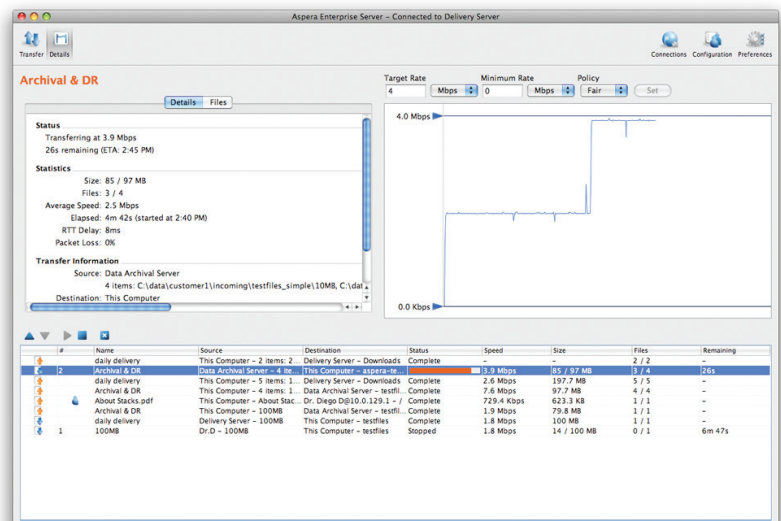
With the option to run in the cloud, Enterprise Server enables access to instantly scalable, on demand storage and computing capacity.

#### FAST RELIABLE TRANSFERS

Manually or automatically transfer files and directories or schedule repeating transfers. Allocate bandwidth based on transfer priority. Enable connections with a variety of client options including desktop applications, mobile apps, and third-party embedded clients. Provide worry-free experience with automatic retry-and-resume for failed transfers.

#### VERSATILE ADMINISTRATIVE OPTIONS

Server administrators can create user accounts with varied levels of access control, defining “root” directory, security



requirements and bandwidth profiles.

Admin-level users have access to real-time transfer monitoring, detailed reporting, and control over aggregate and per-flow transfer rate caps and prioritization.

#### ENTERPRISE-GRADE SECURITY

Aspera Enterprise Server protects your vital digital assets with thorough SSH authentication, in-transit and at-rest encryption, and data integrity verification for each transmitted block.

#### FILE-BASED WORKFLOW AUTOMATION

Create repeatable and scheduled transfers (one-time and recurring) using templates in Aspera Console. Develop custom pre- and post-transfer processing with hot folders, scripts, web services and third-party embedded clients. Accept non-Aspera file transfers and automatically forward files to any other Aspera server.

# Aspera Enterprise Server

## SUPPORTED PLATFORMS

### Server

- Linux 64-bit and 32-bit
- Windows 2008r2, 2012r2, 7, 8, 10

### Browsers

- Microsoft Edge, Firefox 27-48, Chrome 32-50

## TYPICAL APPLICATIONS

### Enterprise-wide file movement

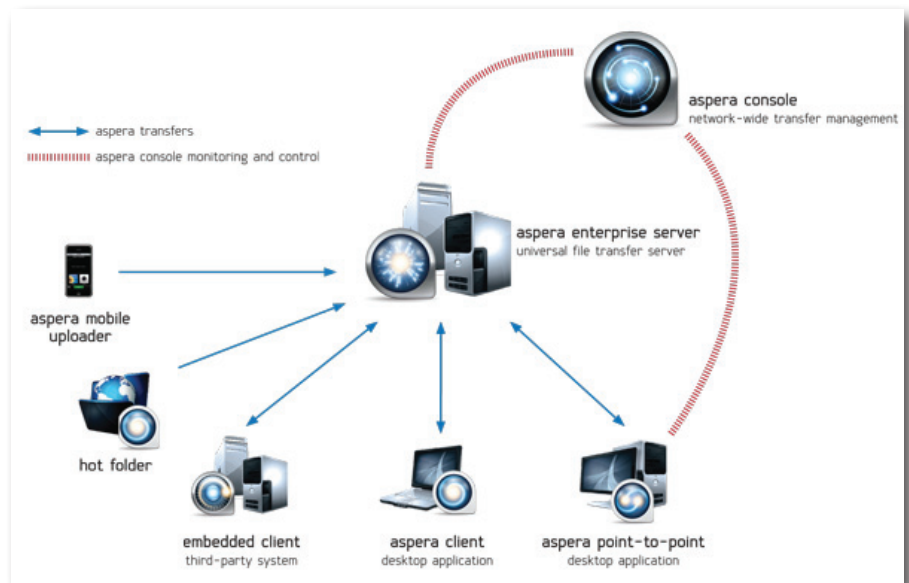
Create a centralized, high-speed file repository that can be accessed via Aspera desktop client or custom applications using Aspera embedded client.

### High-volume content ingest and distribution

Enable outside organizations to easily contribute or download digital content via secure, reliable, high-speed file transfers.

### FTP/SFTP server replacement for high performance transfers

With speeds that are hundreds of times faster than traditional protocols, FASP-powered Aspera Enterprise Server eliminates the low-speed, unreliable, insecure, and bandwidth-underutilizing FTP transfers with blazing fast transport, enterprise-grade security, and unmatched bandwidth utilization and control.



## FEATURES AND BENEFITS

### Versatile file transfer

- Transfer initiation from Desktop and Point-to-Point Clients, command line, third-party embedded clients, or mobile app.
- Guaranteed delivery times with "minimum transfer rate" configurable via transfer priority levels.
- High-availability cluster configuration options (active/active or active/passive) and reliable deliveries with automatic retry and resume of partial or failed transfers.
- Simultaneous multi-location file delivery using multi-point transfers.

### Transfer Automation

- Create automated one-time or recurring Aspera transfers.
- Add custom pre- and post-processing functionality on managed nodes using scripts, web services or SDK library.
- Automatically forward any file to/from any managed Aspera node.
- Support for Aspera Sync enables multi-site, multi-directional file synchronization.

### Comprehensive administration

- Create unlimited number of users, define access rights and transfer settings for each one, and enforce security settings based on organizational requirements.
- Set transfer priorities and define aggregate or per-flow bandwidth allocation; vary transfer settings based on time-of-day/day-of-week, per user or group, and by client IP address or metadata.
- Monitor all incoming and outgoing transfers in real-time; cancel, pause, resume or reorder transfers in the queue on the fly; configure email notifications and delivery confirmations on client and server.
- Using Aspera Console, access detailed server transfer logs in a centralized database and run pre-defined or custom reports for billing and auditing.

### Bullet-proof security

- Keep your business-critical digital assets safe with Aspera's enterprise-grade security features, which include thorough SSH authentication, FIPS 140-2 compliant cryptographic module, and data integrity verification for each transmitted block.
- AES-128 data encryption in-transit and at-rest, both client side and server side, with configurable per-user encryption setting and minimum required password strength.

©2016 Aspera, an IBM Company. All rights reserved.

Product features, specifications, system requirements and availability are subject to change without notice. FASP and *aspex* are trademarks of Aspera, Inc. in the U.S. and other countries. All other trademarks contained therein are the property of their respective owners.

## About Aspera

Aspera, an IBM company, is the creator of next-generation transport technologies that move the world's data at maximum speed regardless of file size, transfer distance and network conditions. Part of IBM Cloud, Aspera software is powered by the Emmy®-award-winning FASP® protocol to deliver the fastest, most predictable file-transfer, share and sync experience across on-premises, cloud, and hybrid infrastructure. Aspera's core technology delivers unprecedented control over bandwidth, complete security and uncompromising reliability. Organizations across a variety of industries on six continents rely on Aspera software for the business-critical transport of their digital assets.

Learn more at [www.asperasoft.com](http://www.asperasoft.com) and follow us on Twitter @asperasoft for more information.