

Aspera Connect Server

Universal file transfer server for browsers and web applications

AT A GLANCE

Key Features

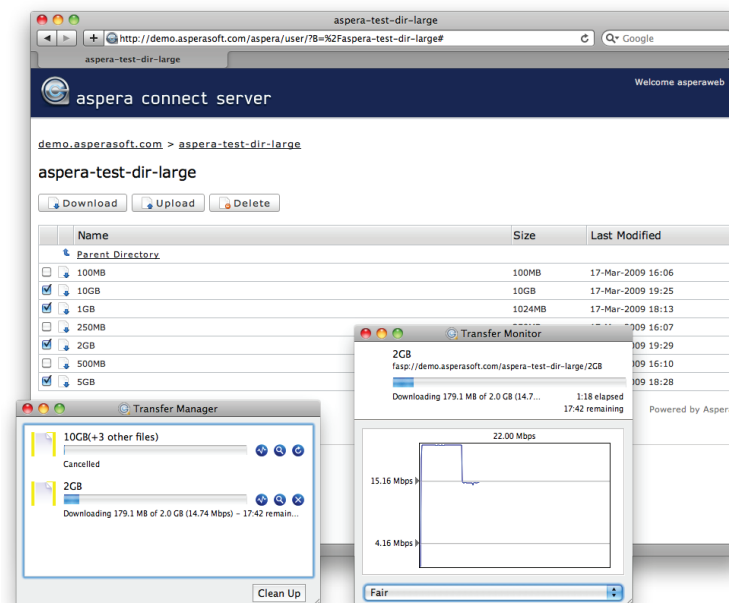
- Supports Connect Web Browser Plug-in and enables web-based transfers for Aspera web application *faspex*™ and Shares.
- Uploads and downloads from web browser plug-in, Desktop and Point-to-Point Clients, command line, third-party embedded clients, or Mobile Uploader app.
- Deployable on premises or in the cloud (public, private, hybrid)
- Parallel/multi-host transfer feature enables mass data transfers to multiple computers in both cloud storage and on-premises compute clusters
- Browser-independent transfers, allowing web browser to be closed during transfer.
- Real-time activity monitoring for all incoming and outgoing transfers, with configurable email notifications and server detailed transfer logging in centralized database.
- Remote management, monitoring and control via Aspera Console.
- AES-128 data encryption in-transit and at-rest with configurable per-user encryption settings.
- Server side encryption at rest for seamless on-the-fly encryption and decryption of content written to Aspera server hosts using a secret supplied by the server.

Key Benefits

- Robust and reliable transfers with automatic retry and resume of partial or failed transfers.
- Highly scalable, with thousands of concurrent transfer sessions and multi gigabit-per-second aggregate throughput.
- Maximum control, even resource usage, and fastest transfer times with configurable options for controlling the intra-file 'splitting' over the parallel sessions

Built upon Aspera Enterprise Server technology, the Aspera Connect Server is the ideal solution when files and directories are exchanged with a large number of users over the WAN.

With patented FASP® transport at its core, the Aspera Connect Server delivers unmatched performance and includes all the exceptional transfer and user management capabilities of the industry-standard Enterprise Server.



Featuring a web-based directory listing that can be accessed from most standard browsers, the Aspera Connect Server lets authorized users upload and download data with the free, auto-installed Aspera Connect web browser plug-in. Connections with Enterprise Servers, Point-to-point, Client and Mobile Uploader applications are also supported.

Thanks to a set of rich APIs, the Aspera Connect Server can be embedded into any web application to serve as the high-

speed backbone for transfers of file-based data over the public Internet or private IP links.

FAST, RELIABLE TRANSFERS

Manually transfer files and directories or schedule repeating transfers. Allocate bandwidth based on transfer priority. Enable connections with a variety of client options including desktop applications, mobile apps, and third-party embedded

clients. Provide worry-free experience with automatic retry-and-resume for failed transfers.

SCALABLE AND EFFICIENT TRANSFER ENVIRONMENT

High-performance FASP transport supports thousands of concurrent transfer sessions and delivers solid

throughput over high-loss and high-delay networks and maximizes utilization of allocated bandwidth on low capacity and on multi-gigabit networks.

WEB ENABLEMENT

Intuitive web-based interface is coupled with a self-installing browser plug-in to create a seamless user experience. Rich APIs make it easy to implement Aspera FASP transport within any web application.

Aspera Connect Server

SUPPORTED PLATFORMS

Server

- Linux 64-bit and 32-bit
- Windows 2008r2, 2012r2, 7, 8, 10

Browsers

- Microsoft Edge, Firefox 27-48, Chrome 32-50

TYPICAL APPLICATIONS

Global file exchange for large, distributed groups of users

Share and exchange files or entire directories of any size with users across the globe, over any distances or networks, with only a web browser required on users' end.

Enterprise-wide file movement

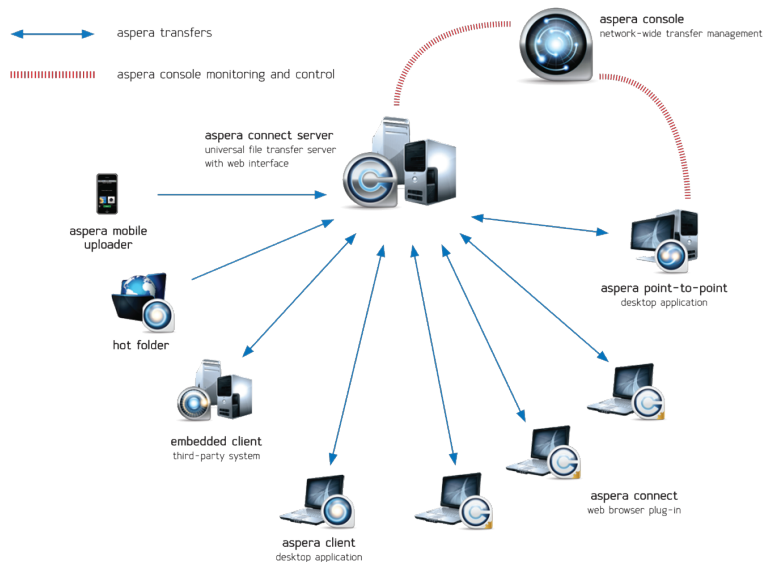
Create a centralized, high-speed file repository that can be accessed via self-installing browser plug-in, Aspera desktop clients, or custom applications using Aspera embedded client.

Field and third-party content or data gathering and distribution

Enable outside organizations to easily contribute or download digital content via secure, reliable, high-speed file transfers.

High-speed file transfer backbone behind web applications

Using Aspera's rich APIs, easily enable high-speed file uploads and downloads for web applications such as digital asset management systems and media content portals.



FEATURES AND BENEFITS

Versatile file transfers

- Transfer initiation from browser plug-in, Desktop and Point-to-Point Clients, command line, third-party embedded clients, or Mobile Uploader app.
- Guaranteed delivery times with "minimum transfer rate" configurable via transfer priority levels.
- High-availability cluster configuration options (active/active or active/passive) and reliable deliveries with automatic retry and resume of partial or failed transfers.
- Simultaneous multi-location file delivery using multi-point transfers.

Browser plug-in client

- Automatic installation, upgrade and launching within the web browser with transfers taking place independent of the browser (i.e. browser can be closed during transfers).
- Supports file, directory, and multi-item transfers, queues uploads and downloads, allowing user to override queue priorities and make on-the-fly rate control changes.
- Basic transfer bandwidth and progress reporting.

Comprehensive administration

- Create unlimited number of users, define access rights and transfer settings for each one, and enforce security settings based on organizational requirements.
- Set transfer priorities and define aggregate or per-flow bandwidth allocation; vary transfer settings based on time-of-day/day-of-week, per user or group, and by client IP address or metadata.
- Monitor all incoming and outgoing transfers in real-time; cancel, pause, resume or reorder transfers in the queue on the fly; configure email notifications and delivery confirmations on client and server.
- Using Aspera Console, access detailed server transfer logs in a centralized database and run pre-defined or custom reports for billing and auditing.

Transfer automation

- Create repeatable and scheduled transfers (one-time and recurring) through templates using Aspera Console.
- Utilize hot folder services and define custom pre- and post-delivery functionality using scriptable command line, web services or SDK Library.

©2016 Aspera, an IBM Company. All rights reserved.

Product features, specifications, system requirements and availability are subject to change without notice. FASP and *faspex* are trademarks of Aspera, Inc. in the U.S. and other countries. All other trademarks contained therein are the property of their respective owners.

About Aspera

Aspera, an IBM company, is the creator of next-generation transport technologies that move the world's data at maximum speed regardless of file size, transfer distance and network conditions. Part of IBM Cloud, Aspera software is powered by the Emmy®-award-winning FASP® protocol to deliver the fastest, most predictable file-transfer, share and sync experience across on-premises, cloud, and hybrid infrastructure. Aspera's core technology delivers unprecedented control over bandwidth, complete security and uncompromising reliability. Organizations across a variety of industries on six continents rely on Aspera software for the business-critical transport of their digital assets.

Learn more at www.asperasoft.com and follow us on Twitter @asperasoft for more information.